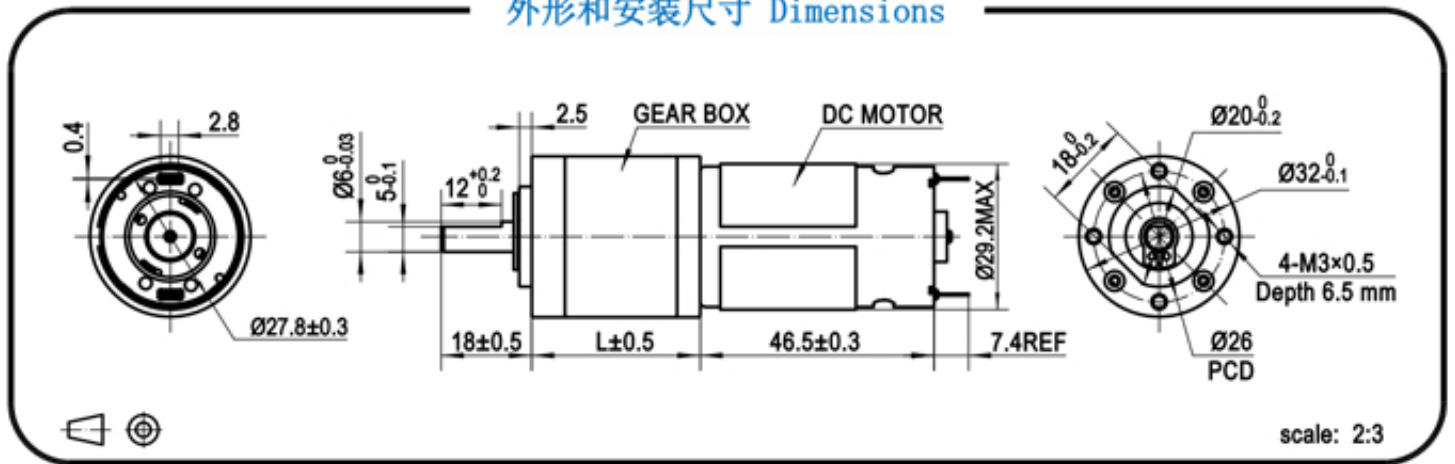




## 外形和安装尺寸 Dimensions



## 减速电机主要技术参数 Reducer motor Technical Data

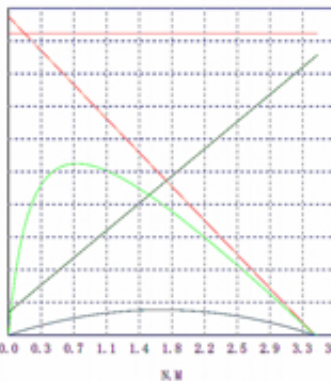
减速比 Reduction ratio	最大额定力矩 Max. Running torque	最大损坏扭力 Max. Gearbr eaking torque	效率 Gearing efficiency	级数 Number of stages	减速电机长度 Reducer motor length*L*mm
1/3, 1/5	1.0 kgf.cm	3.5 kgf.cm	80%	1	68.7
1/11, 1/16, 1/21	2.5 kgf.cm	8.0 kgf.cm	70%	2	74.4
1/38, 1/52, 1/72, 1/100	10.0 kgf.cm	35.0 kgf.cm	60%	3	80.2
1/126, 1/175, 1/242 1/334, 1/462	25.0 kgf.cm	75.0 kgf.cm	50%	4	86.0
1/424, 1/586, 1/810 1/1120, 1/1549, 1/2142	25.0 kgf.cm	75.0 kgf.cm	40%	5	91.8

## 马达清单 Motor data

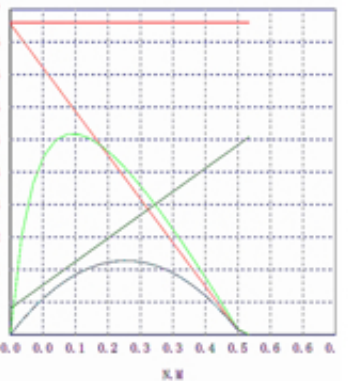
马达型号 Motor type	额定电压 Rated volt (v)	空载电流 No load current (mA)	空载转速 No load speed (rpm)	额定电流 Rated current (mA)	额定转速 Rated speed (rpm)	额定扭力 Rated torque (gf.cm)	额定功率 Rated power (w)	堵转扭力 Stall torque (gf.cm)	堵转电流 Stall current (mA)	重量 Weight (g)
DC-395126000	12	≤200	6000	≤830	5100	97	5.1	≤789	≤5600	104.0
DC-395246000	24	≤130	6000	≤450	5200	99	5.3	≤725	≤2700	104.0

## 减速电机特性图 Reducer motor characteristics

Volt	Amp	Eff(%)	V(out)	SPM
12.98	2.09	50.00	30.00	25
11.68	1.88	45.00	27.00	24
10.38	1.67	40.00	24.00	21
9.08	1.47	35.00	21.00	18
7.79	1.26	30.00	18.00	16
6.49	1.05	25.00	15.00	13
5.19	0.84	20.00	12.00	10
3.89	0.63	15.00	9.00	8
2.60	0.42	10.00	6.00	5
1.30	0.21	5.00	3.00	3
0.00	0.00	0.00	0.00	0



Volt	Amp	Eff(%)	V(out)	SPM
24.88	3.34	50.00	30.00	507
22.49	3.01	45.00	27.00	456
19.91	2.67	40.00	24.00	406
17.42	2.34	35.00	21.00	355
14.93	2.00	30.00	18.00	304
12.44	1.67	25.00	15.00	253
9.95	1.34	20.00	12.00	200
7.47	1.00	15.00	9.00	152
4.98	0.67	10.00	6.00	101
2.49	0.33	5.00	3.00	51
0.00	0.00	0.00	0.00	0



- 1、减速后的输出力矩=马达力矩X减速比X齿轮效率。输出转速=马达转速/减速比。
- 1、The gearmotor's output torque:motor torque x reduction ratio x gearing efficiency.  
output speed:motor speed / reduction ratio.